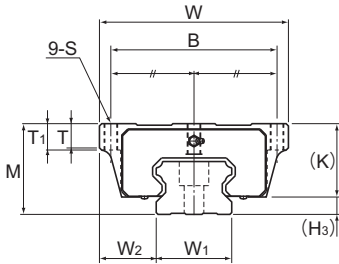
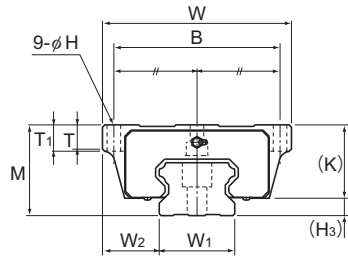


# Models HSR-HA, HSR-HB, and HSR-HR



Models HSR100 to 150HA



Models HSR100 to 150HB

Model No.	Outer dimensions			LM block dimensions											Grease nipple	H <sub>3</sub>
	Height	Width	Length	B	C	H	S × ℓ	L <sub>i</sub>	T	T <sub>1</sub>	K	N	E			
	M	W	L	B	C	H	S × ℓ	L <sub>i</sub>	T	T <sub>1</sub>	K	N	E			
HSR 100HA HSR 100HB HSR 100HR	120	250 250 200	334	220 220 130	200	20	— — M18 × 27	261	32 32 33	35 35 —	100	23	16	B-PT1/4	20	
HSR 120HA HSR 120HB HSR 120HR	130	290 290 220	365	250 250 146	210	22	— — M20 × 30	287	34 34 33.7	38 38 —	110	26.5	16	B-PT1/4	20	
HSR 150HA HSR 150HB HSR 150HR	145	350 350 266	396	300 300 180	230	26	— — M24 × 35	314	36 36 33	40 40 —	123	29	16	B-PT1/4	22	

## Model number coding

**HSR150 HR 2 UU C1 +2350L H T - II**

Model number

Type of LM block

Contamination protection accessory symbol

LM rail length (in mm)

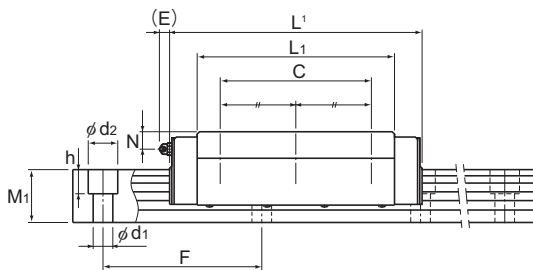
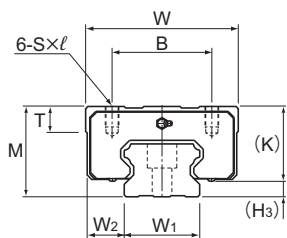
Symbol for LM rail jointed use

Symbol for No. of rails used on the same plane

No. of LM blocks used on the same rail

Radial clearance symbol  
Normal (No symbol)  
Light preload (C1)  
Medium preload (C0)

Accuracy symbol  
Normal grade (No Symbol)/High accuracy grade (H)  
Precision grade (P)/Super precision grade (SP)  
Ultra precision grade (UP)



Models HSR100 to 150HR

Unit: mm

	LM rail dimensions					Basic load rating		Static permissible moment kN·m <sup>3</sup>					Mass	
	Width	Height	Pitch	Length <sup>2</sup>	C	C <sub>0</sub>	M <sub>A</sub>		M <sub>B</sub>		M <sub>C</sub>	LM block	LM rail	
	W <sub>1</sub> ±0.05						W <sub>2</sub>	M <sub>1</sub>	F	d <sub>1</sub> × d <sub>2</sub> × h	Max	kN	kN	1 block
100	75 75 50	70	210	26 × 39 × 32	3000	441	540	20.7	105	20.7	105	24.1	32	49
114	88 88 53	75	230	33 × 48 × 43	3000	540	653	27.5	138	27.5	138	33.3	43	61
144	103 103 61	85	250	39 × 58 × 46	3000	518	728	33.6	167	33.6	167	45.2	62	87