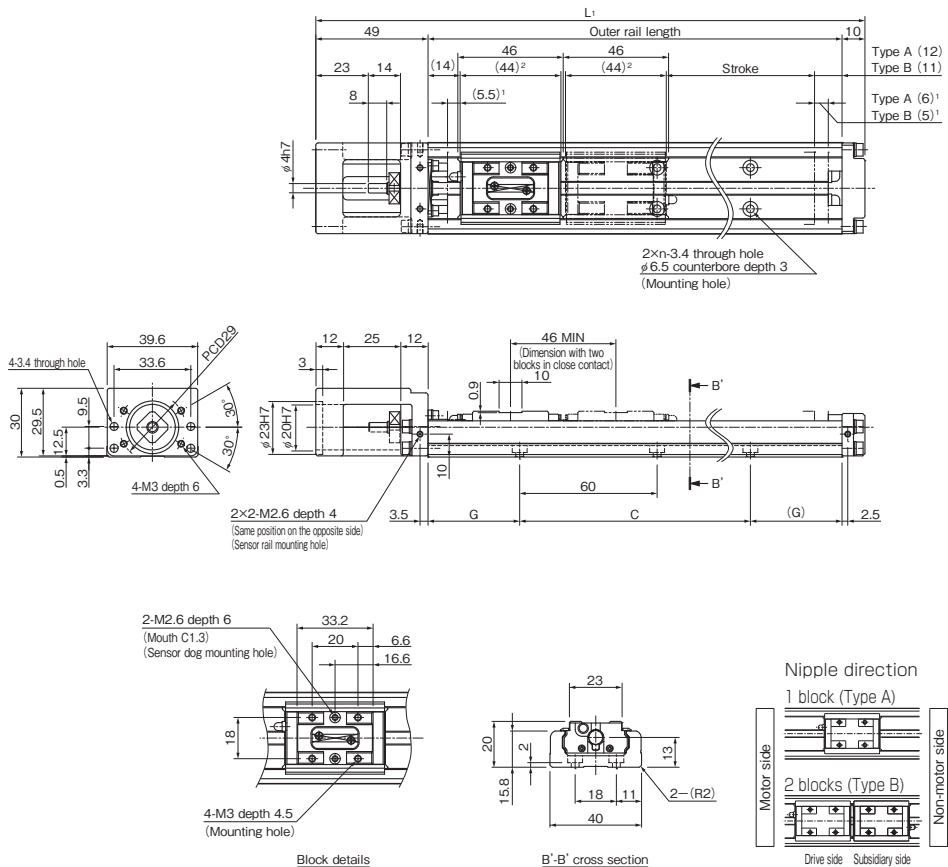


KR20 Without Cover, Direct Motor Coupling

Model KR20□□A (with a Single Long Block)

Model KR20□□B (with Two Long Blocks)

For model number coding, see **A2-136**.



¹ Distance between the mechanical stopper and the stroke starting position.

² This indicates the block length when calculating the possible stroke range.
It is 90 mm (total) for a KR20 with two blocks in close contact with each other (Type B).

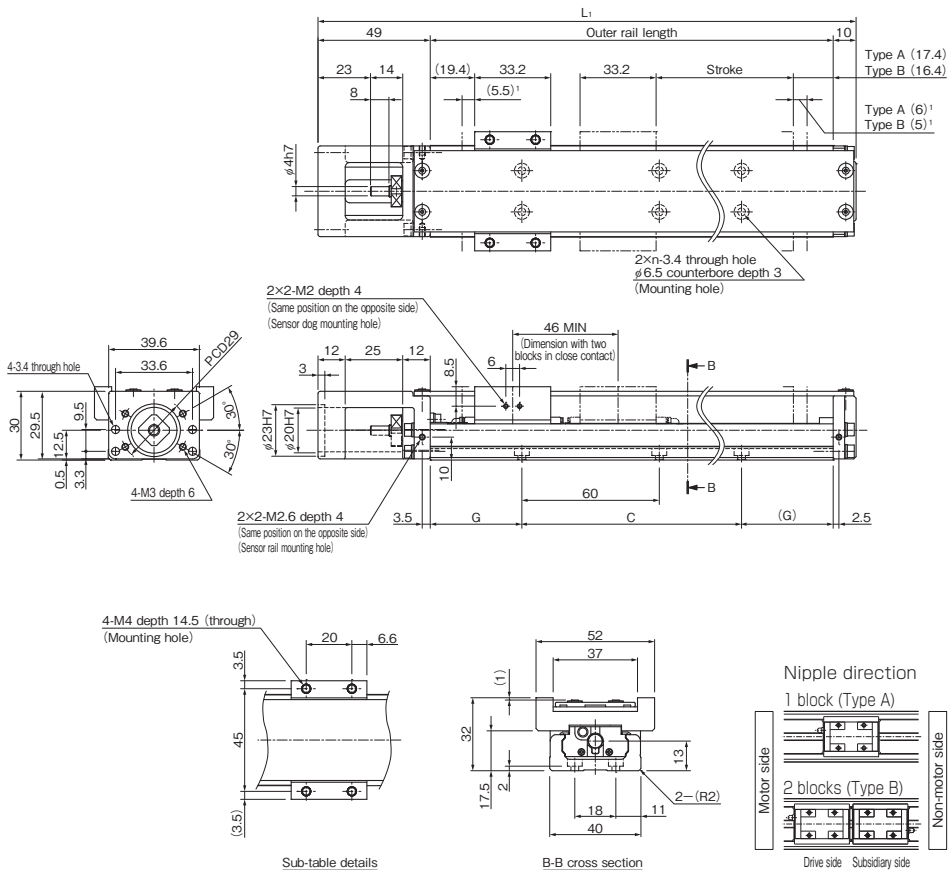
Stroke (mm) (stroke between mechanical stoppers)		Outer rail length (mm)	Overall length L_1 (mm)	C (mm)	G (mm)	n	Overall main unit mass (kg)	
Type A	Type B ¹						Type A	Type B
30 (41.5)	—	100	159	60	20	2	0.48	—
80 (91.5)	35 (45.5)	150	209	120	15	3	0.61	0.69
130 (141.5)	85 (95.5)	200	259	120	40	3	0.75	0.83

KR20 With Cover, Direct Motor Coupling

Model KR20□□A (with a Single Long Block)

Model KR20□□B (with Two Long Blocks)

For model number coding, see **A2-136**.



¹ Distance between the mechanical stopper and the stroke starting position.

Stroke (mm) (stroke between mechanical stoppers)		Outer rail length (mm)	Overall length L_1 (mm)	C (mm)	G (mm)	n	Overall main unit mass (kg)	
Type A	Type B ¹						Type A	Type B
30 (41.5)	—	100	159	60	20	2	0.56	—
80 (91.5)	35 (45.5)	150	209	120	15	3	0.71	0.84
130 (141.5)	85 (95.5)	200	259	120	40	3	0.85	0.98