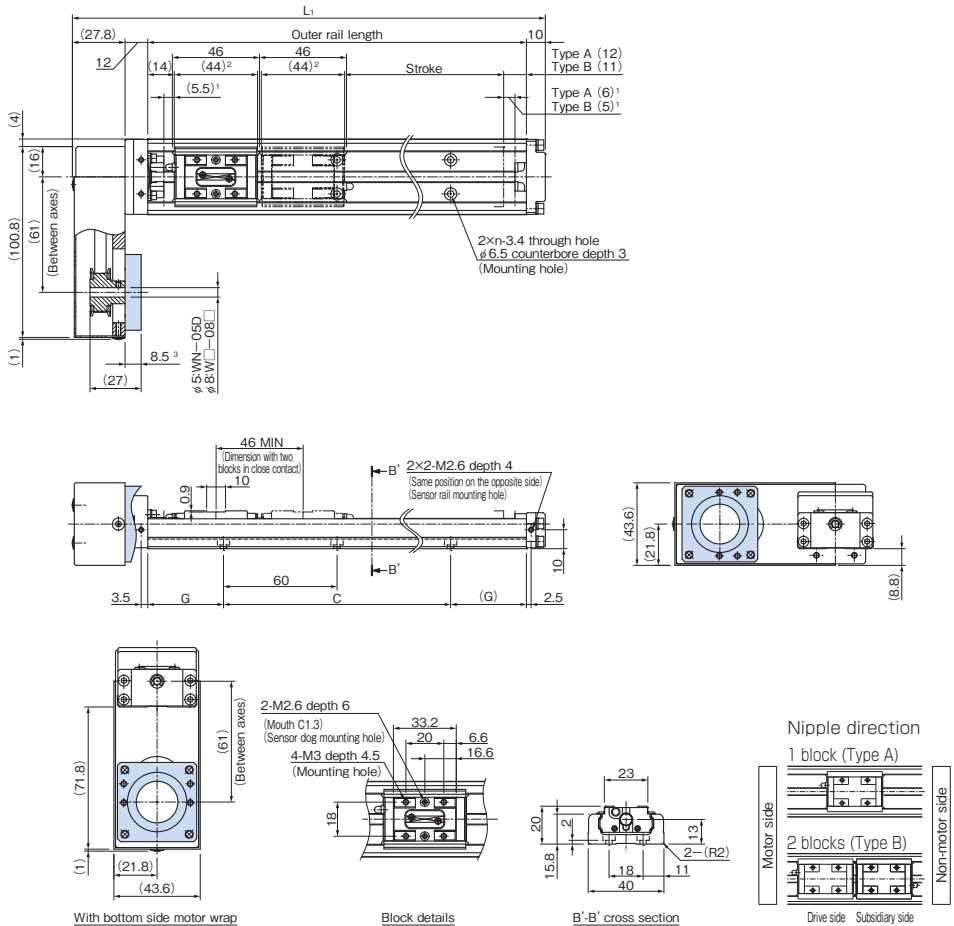


KR20 Without Cover, Motor Wrap

Model KR20□□A (with a Single Long Block)

Model KR20□□B (with Two Long Blocks)

For model number coding, see **A2-136**.



With bottom side motor wrap

Block details

B'-B' cross section

Nipple direction

1 block (Type A)

2 blocks (Type B)

Motor side

Drive side Subsidiary side

Non-motor side

¹ Distance between the mechanical stopper and the stroke starting position.

² This indicates the block length when calculating the possible stroke range.

It is 90 mm (total) for a KR20 with two blocks in close contact with each other (Type B).

³ Dimensions will vary if "WN" is selected for model number coding \square Housing A/intermediate flange. For details, see **A2-227**.

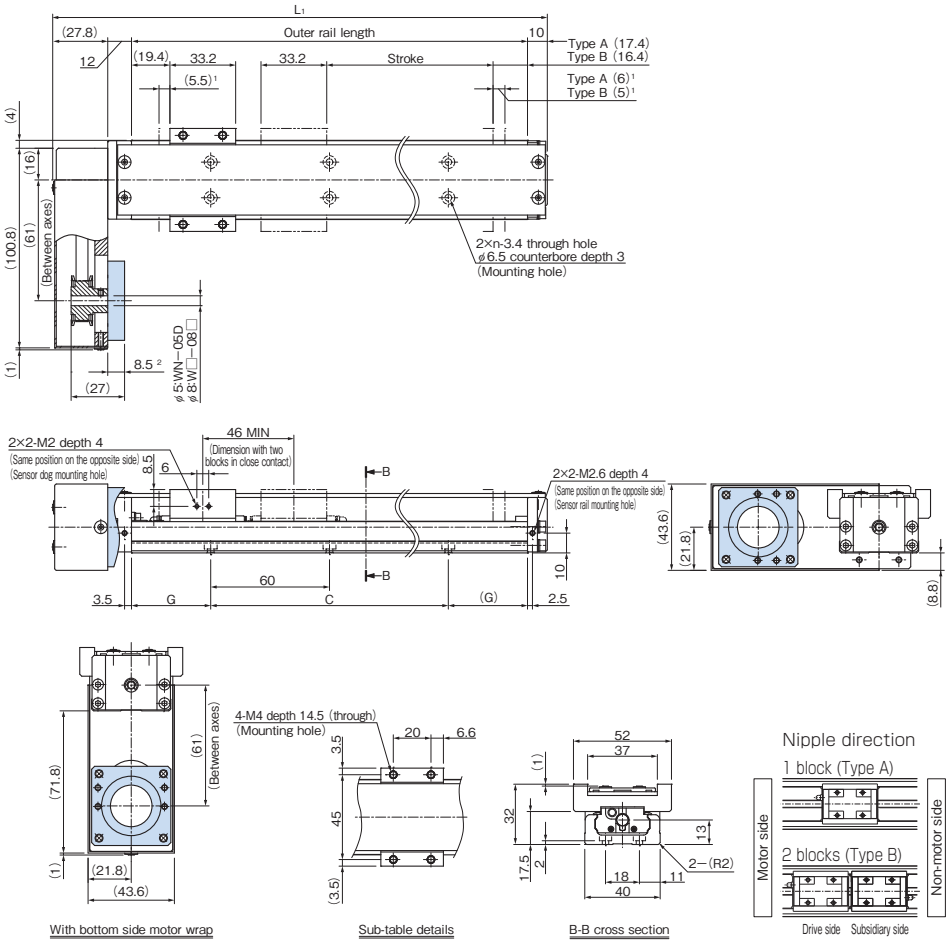
Stroke (mm) (stroke between mechanical stoppers)		Outer rail length (mm)	Overall length L_1 (mm)	C (mm)	G (mm)	n	Overall main unit mass (kg)	
Type A	Type B ¹						Type A	Type B
30 (41.5)	—	100	149.8	60	20	2	0.73	—
80 (91.5)	35 (45.5)	150	199.8	120	15	3	0.87	0.95
130 (141.5)	85 (95.5)	200	249.8	120	40	3	1.01	1.09

KR20 With Cover, Motor Wrap

Model KR20□□A (with a Single Long Block)

Model KR20□□B (with Two Long Blocks)

For model number coding, see **A2-136**.



With bottom side motor wrap

Sub-table details

B-B cross section

¹ Distance between the mechanical stopper and the stroke starting position.

² Dimensions will vary if "WN" is selected for model number coding. ³ Housing A/intermediate flange. For details, see **A2-227**.

Stroke (mm) (stroke between mechanical stoppers)		Outer rail length (mm)	Overall length L_1 (mm)	C (mm)	G (mm)	n	Overall main unit mass (kg)	
Type A	Type B ¹						Type A	Type B
30 (41.5)	—	100	149.8	60	20	2	0.82	—
80 (91.5)	35 (45.5)	150	199.8	120	15	3	0.96	1.09
130 (141.5)	85 (95.5)	200	249.8	120	40	3	1.11	1.24