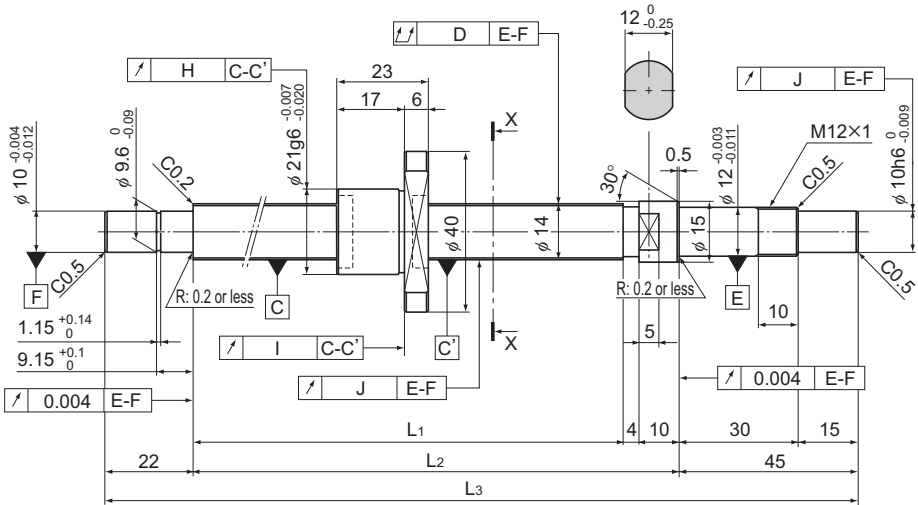


BNK1402-3 Shaft Diameter: 14; Lead: 2

DN value	70,000
----------	--------



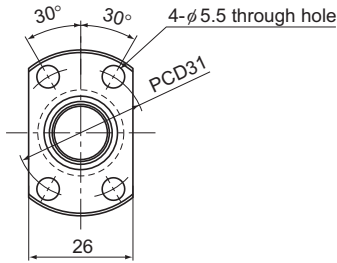
Model No.	Stroke	Screw shaft length		
		L ₁	L ₂	L ₃
BNK 1402-3RRG0+166LC3Y	50	85	99	166
BNK 1402-3RRG0+166LC5Y				
BNK 1402-3RRG2+166LC7Y				
BNK 1402-3RRG0+216LC3Y	100	135	149	216
BNK 1402-3RRG0+216LC5Y				
BNK 1402-3RRG2+216LC7Y				
BNK 1402-3RRG0+266LC3Y	150	185	199	266
BNK 1402-3RRG0+266LC5Y				
BNK 1402-3RRG2+266LC7Y				
BNK 1402-3RRG0+316LC3Y	200	235	249	316
BNK 1402-3RRG0+316LC5Y				
BNK 1402-3RRG2+316LC7Y				
BNK 1402-3RRG0+416LC3Y	300	335	349	416
BNK 1402-3RRG0+416LC5Y				
BNK 1402-3RRG2+416LC7Y				

Notes: A stainless steel type is also available for Model BNK1402. When placing an order, add symbol "M" to the end of the model number.

(Example) BNK1402-3RRG0+166LC3Y M

Symbol for stainless steel type

For accuracy grades C3 and C5, GT clearance is also available as standard.



X-X arrow view

Ball screw specifications			
Lead (mm)	2		
BCD (mm)	14.3		
Thread minor diameter (mm)	13		
Threading direction, No. of threaded grooves	Rightward, 1		
No. of circuits	1 turn × 3 rows		
Clearance symbol	G0	GT	G2
Axial clearance (mm)	0	0.005 or less	0.02 or less
Basic dynamic load rating Ca (kN)	1.8	1.8	1.8
Basic static load rating C _{0a} (kN)	4.3	4.3	4.3
Preload torque (N·m)	4.9×10 ³ to 4.9×10 ²	—	—
Spacer ball	None	None	None
Rigidity value (N/μm)	140		
Circulation method	Deflector		

Unit: mm

	Runout of the screw shaft axis D	Runout of the nut circumference H	Flange mounting surface runout I	Runout of the thread groove surface J	Lead angle accuracy		Nut mass kg	Shaft mass kg/m	Permissible rotational speed min ⁻¹
					Representative travel distance error	Fluctuation			
	0.02	0.01	0.008	0.009	±0.008	0.008	0.15	1	3,500
	0.025	0.012	0.01	0.012	±0.018	0.018	0.15	1	3,500
	0.04	0.02	0.014	0.014	Travel distance: ±0.05/300		0.15	1	3,500
	0.025	0.01	0.008	0.009	±0.01	0.008	0.15	1	3,500
	0.03	0.012	0.01	0.012	±0.02	0.018	0.15	1	3,500
	0.045	0.02	0.014	0.014	Travel distance: ±0.05/300		0.15	1	3,500
	0.025	0.01	0.008	0.009	±0.01	0.008	0.15	1	3,500
	0.03	0.012	0.01	0.012	±0.02	0.018	0.15	1	3,500
	0.045	0.02	0.014	0.014	Travel distance: ±0.05/300		0.15	1	3,500
	0.03	0.01	0.008	0.009	±0.012	0.008	0.15	1	3,500
	0.04	0.012	0.01	0.012	±0.023	0.018	0.15	1	3,500
	0.055	0.02	0.014	0.014	Travel distance: ±0.05/300		0.15	1	3,500
	0.04	0.01	0.008	0.009	±0.013	0.01	0.15	1	3,500
	0.05	0.012	0.01	0.012	±0.025	0.02	0.15	1	3,500
	0.06	0.02	0.014	0.014	Travel distance: ±0.05/300		0.15	1	3,500