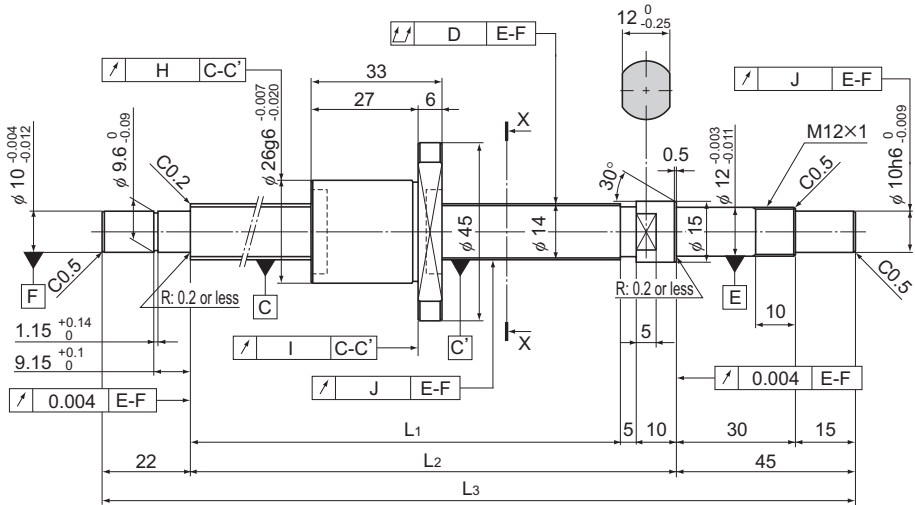


BNK1404-3 Shaft Diameter: 14; Lead: 4

DN value	70,000
----------	--------



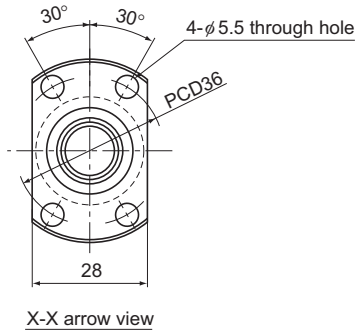
Model No.	Stroke	Screw shaft length		
		L ₁	L ₂	L ₃
BNK 1404-3RRG0+230LC3Y	100	148	163	230
BNK 1404-3RRG0+230LC5Y				
BNK 1404-3RRG2+230LC7Y				
BNK 1404-3RRG0+280LC3Y	150	198	213	280
BNK 1404-3RRG0+280LC5Y				
BNK 1404-3RRG2+280LC7Y				
BNK 1404-3RRG0+330LC3Y	200	248	263	330
BNK 1404-3RRG0+330LC5Y				
BNK 1404-3RRG2+330LC7Y				
BNK 1404-3RRG0+430LC3Y	300	348	363	430
BNK 1404-3RRG0+430LC5Y				
BNK 1404-3RRG2+430LC7Y				
BNK 1404-3RRG0+530LC3Y	400	448	463	530
BNK 1404-3RRG0+530LC5Y				
BNK 1404-3RRG2+530LC7Y				

Notes: A stainless steel type is also available for Model BNK1404. When placing an order, add symbol "M" to the end of the model number.

(Example) BNK1404-3RRG0+230LC3Y M

Symbol for stainless steel type

For accuracy grades C3 and C5, GT clearance is also available as standard.



Ball screw specifications			
Lead (mm)	4		
BCD (mm)	14.65		
Thread minor diameter (mm)	12.2		
Threading direction, No. of threaded grooves	Rightward, 1		
No. of circuits	1 turn × 3 rows		
Clearance symbol	G0	GT	G2
Axial clearance (mm)	0	0.005 or less	0.02 or less
Basic dynamic load rating C_a (kN)	4.2	4.2	4.2
Basic static load rating C_{0a} (kN)	7.6	7.6	7.6
Preload torque (N·m)	9.8×10^3 to 6.9×10^2	—	—
Spacer ball	None	None	None
Rigidity value (N/μm)	190		
Circulation method	Deflector		

Unit: mm

	Runout of the screw shaft axis D	Runout of the nut circumference H	Flange mounting surface runout I	Runout of the thread groove surface J	Lead angle accuracy		Nut mass kg	Shaft mass kg/m	Permissible rotational speed min ⁻¹
					Representative travel distance error	Fluctuation			
	0.025	0.01	0.008	0.009	±0.01	0.008	0.13	0.8	3,500
	0.03	0.012	0.01	0.012	±0.02	0.018	0.13	0.8	3,500
	0.045	0.02	0.014	0.014	Travel distance: ±0.05/300		0.13	0.8	3,500
	0.025	0.01	0.008	0.009	±0.01	0.008	0.13	0.8	3,500
	0.03	0.012	0.01	0.012	±0.02	0.018	0.13	0.8	3,500
	0.045	0.02	0.014	0.014	Travel distance: ±0.05/300		0.13	0.8	3,500
	0.03	0.01	0.008	0.009	±0.012	0.008	0.13	0.8	3,500
	0.04	0.012	0.01	0.012	±0.023	0.018	0.13	0.8	3,500
	0.055	0.02	0.014	0.014	Travel distance: ±0.05/300		0.13	0.8	3,500
	0.04	0.01	0.008	0.009	±0.013	0.01	0.13	0.8	3,500
	0.05	0.012	0.01	0.012	±0.025	0.02	0.13	0.8	3,500
	0.06	0.02	0.014	0.014	Travel distance: ±0.05/300		0.13	0.8	3,500
	0.045	0.01	0.008	0.009	±0.015	0.01	0.13	0.8	3,500
	0.055	0.012	0.01	0.012	±0.027	0.02	0.13	0.8	3,500
	0.075	0.02	0.014	0.014	Travel distance: ±0.05/300		0.13	0.8	3,500